

Silicon Epitaxial Planar Switching Diode

for high speed switching application

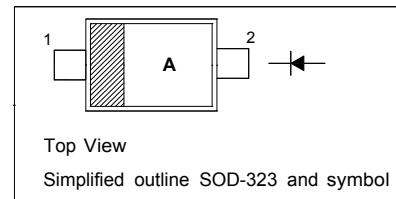
Features

- Extremely small surface mounting type
- High reliability

Marking Code: **A**

PINNING

PIN	DESCRIPTION
1	Cathode
2	Anode



Absolute Maximum Ratings ($T_a = 25^\circ\text{C}$)

Parameter	Symbol	Value	Unit
Peak Reverse Voltage	V_{RM}	90	V
Reverse Voltage	V_R	80	V
Average Rectified Forward Current	$I_{F(AV)}$	100	mA
Peak Forward Current	I_{FM}	225	mA
Non-repetitive Peak Forward Surge Current (at $t = 1$ s)	I_{FSM}	500	mA
Junction Temperature	T_j	150	$^\circ\text{C}$
Storage Temperature Range	T_{stg}	- 55 to + 150	$^\circ\text{C}$

Characteristics at $T_a = 25^\circ\text{C}$

Parameter	Symbol	Max.	Unit
Forward Voltage at $I_F = 100$ mA	V_F	1.2	V
Reverse Current at $V_R = 80$ V	I_R	0.1	μA
Capacitance Between Terminals at $V_R = 0.5$ V, $f = 1$ MHz	C_T	3	pF
Reverse Recovery Time at $V_R = 6$ V, $I_F = 10$ mA, $R_L = 100$ Ω	t_{rr}	4	ns

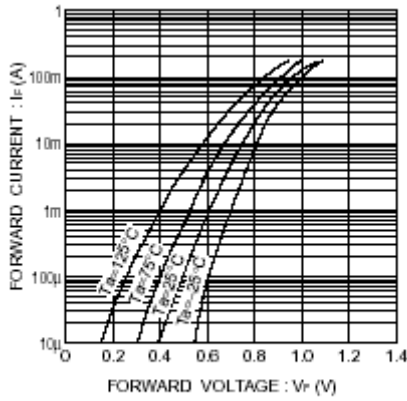


Fig.1 Forward characteristics

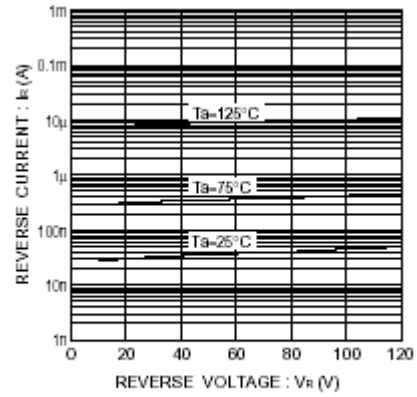


Fig.2 Reverse characteristics

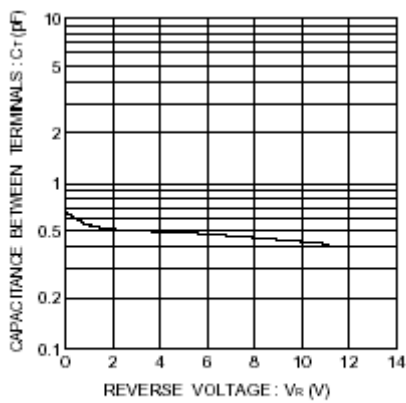


Fig.3 Capacitance between terminals

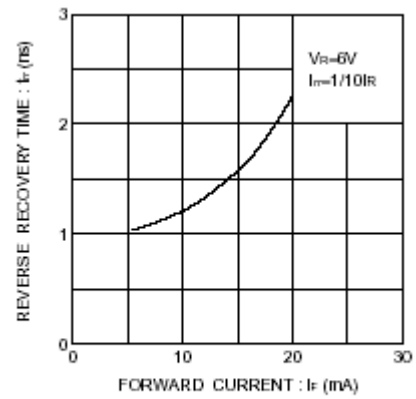


Fig.4 Reverse recovery time characteristics

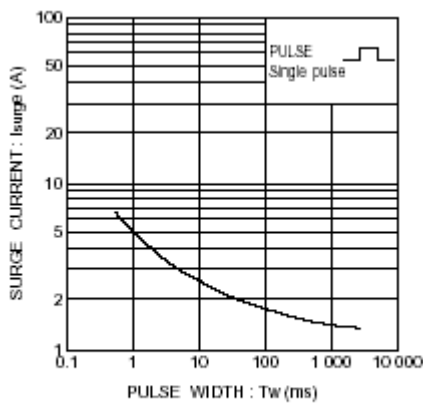


Fig.5 Surge current characteristics

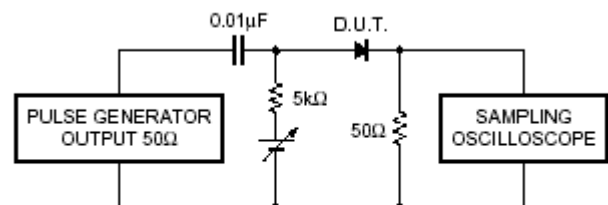


Fig.6 Reverse recovery time (t_r) measurement circuit